

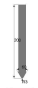




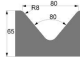
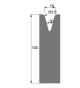
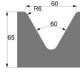
Queue Info:

Name: *second_shift*
 Machine: *AutoPOL*
 Production date: *2020-11-09*

Products: *19*
 Set-up improvement: *28%*

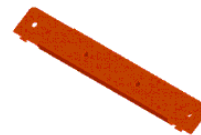
Tool Summary:


 200-60-3-Straight
30,35,40,100,200,515(x4)
 200-86-1-SwanNeck
515

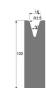
 024-30-5-100
30,35,40,100,515(x4)
 080-80-8-65
200
 016-30-3.5-100
30,100,200
 060-60-6-65
35,40,100,200,515(x3)

000.256.225V5

Program: *000.256.225V5* Material: *Mild Steel*
 Priority: *Rush* Thickness: *3 mm*
 Quantity: *12* Estimate: *00:11*
 Comment:

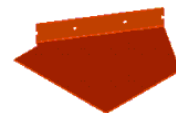



 200-86-1-SwanNeck
515


 016-30-3.5-100
30,100,200

000.256.224V5

Program: *000.256.224V5* Material: *Mild Steel*
 Priority: *Normal* Thickness: *3 mm*
 Quantity: *7* Estimate: *00:09*
 Comment:

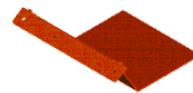



 200-60-3-Straight
515


 024-30-5-100
515

000.256.223V5

Program: *000.256.223V5* Material: *Stainless Steel*
 Priority: *Normal* Thickness: *3 mm*
 Quantity: *32* Estimate: *00:14*
 Comment:



 200-60-3-Straight
515

 024-30-5-100
515

000.256.376V5

Program: 000.256.376V5

Priority: Normal

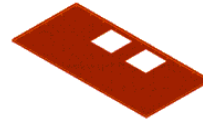
Quantity: 8

Comment:

Material: *Stainless Steel*

Thickness: 3 mm

Estimate: 01:00



200-60-3-Straight
40,515(x4)



024-30-5-100
100,515(x4)

000.261.409V4

Program: 000.261.409V4

Priority: Normal

Quantity: 5

Comment:

Material: *Mild Steel*

Thickness: 6 mm

Estimate: 00:18



200-60-3-Straight
100,515(x3)



060-60-6-65
100,515(x3)

000.261.358V4

Program: 000.261.358V4

Priority: Normal

Quantity: 20

Comment:

Material: *Mild Steel*

Thickness: 6 mm

Estimate: 00:13



200-60-3-Straight
100,515



060-60-6-65
100,515

000.264.501V3

Program: 000.264.501V3

Priority: Normal

Quantity: 88

Comment:

Material: *Mild Steel*

Thickness: 6 mm

Estimate: 00:09



200-60-3-Straight
515



060-60-6-65
515

000.264.685V2

Program: 000.264.685V2

Priority: Normal

Quantity: 22

Comment:

Material: *Mild Steel*

Thickness: 6 mm

Estimate: 00:10



200-60-3-Straight
515



060-60-6-65
515

000.264.691V2

Program: 000.264.691V2

Priority: Normal

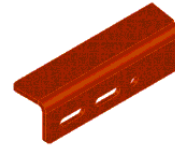
Quantity: 46

Comment:

Material: Mild Steel

Thickness: 6 mm

Estimate: 00:09



200-60-3-Straight
515



060-60-6-65
515

000.267.203V2

Program: 000.267.203V2

Priority: Normal

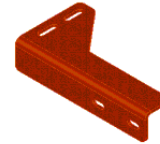
Quantity: 54

Comment:

Material: Mild Steel

Thickness: 6 mm

Estimate: 00:10



200-60-3-Straight
515



060-60-6-65
515

000.261.411V4

Program: 000.261.411V4

Priority: Normal

Quantity: 160

Comment:

Material: Mild Steel

Thickness: 6 mm

Estimate: 00:08



200-60-3-Straight
35



060-60-6-65
35

000.264.446V2

Program: 000.264.446V2

Priority: Normal

Quantity: 6

Comment:

Material: Mild Steel

Thickness: 3 mm

Estimate: 00:08



200-60-3-Straight
35



024-30-5-100
35

000.261.904V2

Program: 000.261.904V2

Priority: Normal

Quantity: 6

Comment:

Material: Mild Steel

Thickness: 3 mm

Estimate: 00:07



200-60-3-Straight
30



024-30-5-100
30

000.264.439V2

Program: 000.264.439V2

Priority: Normal

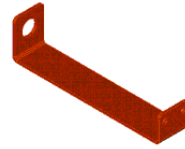
Quantity: 54

Comment:

Material: Mild Steel

Thickness: 3 mm

Estimate: 00:11



200-60-3-Straight
40



024-30-5-100
40

000.264.747V2

Program: 000.264.747V2

Priority: Normal

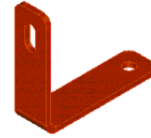
Quantity: 90

Comment:

Material: Mild Steel

Thickness: 6 mm

Estimate: 00:09



200-60-3-Straight
40



060-60-6-65
40

000.264.561V2

Program: 000.264.561V2

Priority: Normal

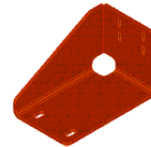
Quantity: 22

Comment:

Material: Mild Steel

Thickness: 6 mm

Estimate: 00:17



200-60-3-Straight
200



060-60-6-65
200

000.264.571V2

Program: 000.264.571V2

Priority: Normal

Quantity: 22

Comment:

Material: Mild Steel

Thickness: 6 mm

Estimate: 00:16



200-60-3-Straight
200



060-60-6-65
200

000.261.330V4

Program: 000.261.330V4

Priority: Normal

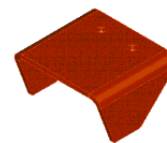
Quantity: 56

Comment:

Material: Mild Steel

Thickness: 8 mm

Estimate: 00:17



200-60-3-Straight
200



080-80-8-65
200

000.261.348V4

Program: 000.261.348V4

Priority: Normal

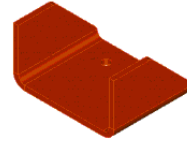
Quantity: 56

Comment:

Material: Mild Steel

Thickness: 8 mm

Estimate: 00:17



200-60-3-Straight

200



080-80-8-65

200